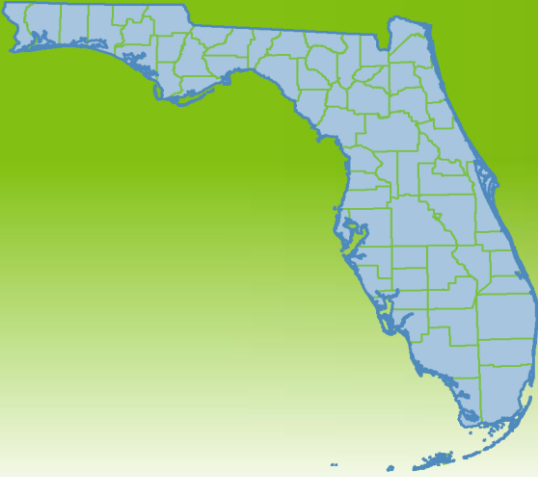


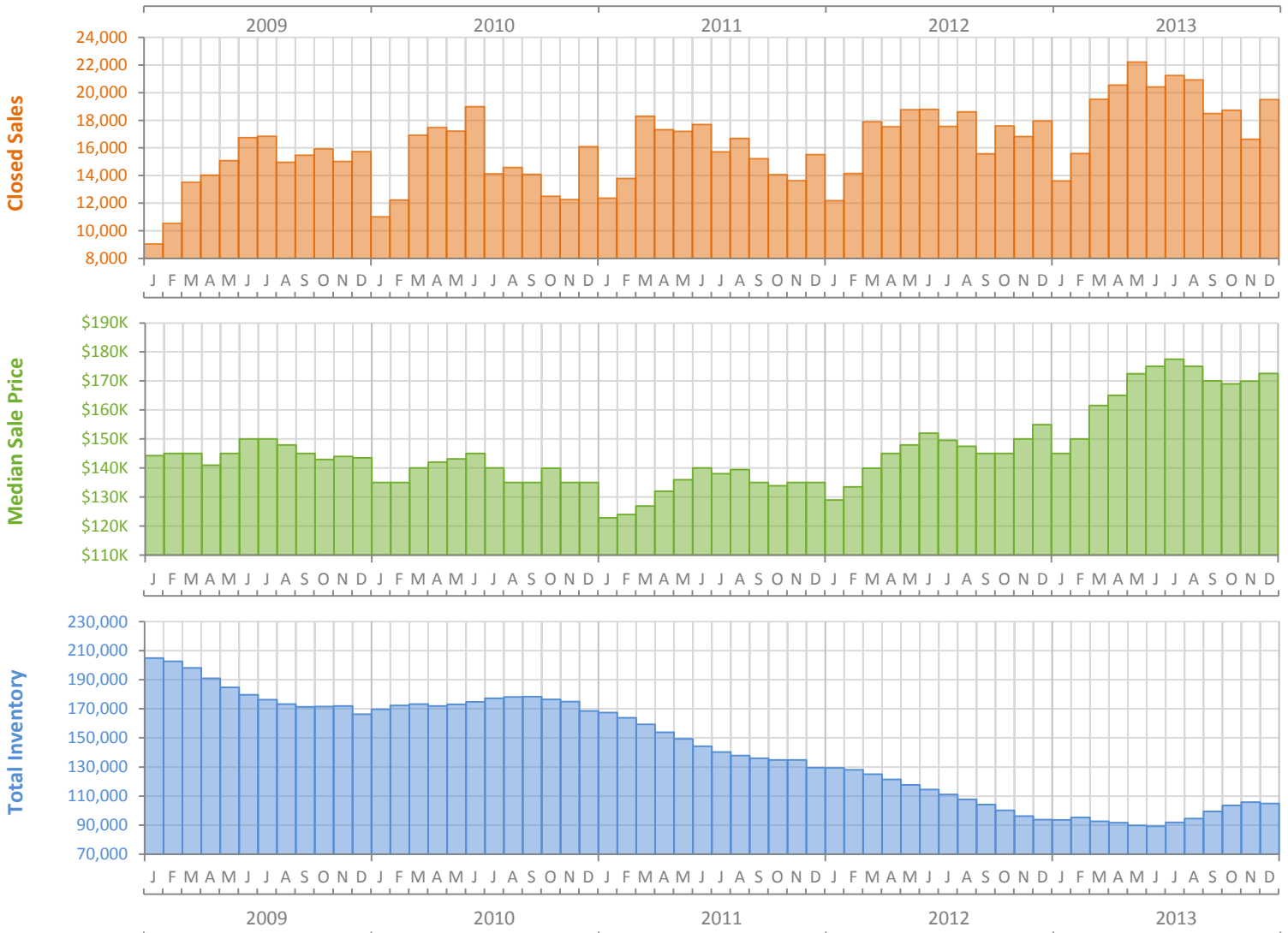
Monthly Market Summary - December 2013

Single Family Homes

Florida



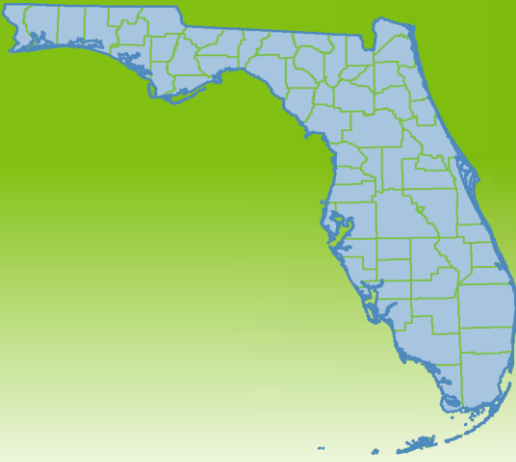
	December 2013	December 2012	Percent Change Year-over-Year
Closed Sales	19,497	17,959	8.6%
Cash Sales	8,326	8,484	-1.9%
New Pending Sales	18,108	18,894	-4.2%
New Listings	24,321	19,653	23.8%
Median Sale Price	\$172,630	\$154,900	11.4%
Average Sale Price	\$253,274	\$245,910	3.0%
Median Days on Market	50	59	-15.3%
Avg. Percent of Original List Price Received	93.3%	92.4%	1.0%
Pending Inventory	37,726	(No Data)	N/A
Inventory (Active Listings)	104,790	93,684	11.9%
Months Supply of Inventory	5.5	5.5	0.1%



Monthly Distressed Market Summary - December 2013

Single Family Homes

Florida



		December 2013	December 2012	Percent Change Year-over-Year
Traditional	Closed Sales	13,627	11,055	23.3%
	Median Sale Price	\$205,000	\$189,000	8.5%
Foreclosure/REO	Closed Sales	3,728	3,002	24.2%
	Median Sale Price	\$105,000	\$105,000	0.0%
Short Sale	Closed Sales	2,142	3,902	-45.1%
	Median Sale Price	\$135,700	\$120,000	13.1%

